

TITLE:

NAME:

ADDRESS:

CITY, STATE, ZIP CODE:

TELEPHONE NUMBER:

EMAIL ADDRESS:

METHOD OF PAYMENT:

..... CHECK ..... MONEY ORDER ..... CREDIT CARD

CREDIT CARD TYPE:

..... VISA ..... MasterCard ..... AMERICAN EXPRESS

CREDIT CARD NUMBER:

EXPIRATION DATE:

CARD SECURITY CODE:

SIGNATURE REQUIRED FOR CHARGE ORDERS:

I WOULD LIKE TO GIVE AN ADDITIONAL GIFT TO GHS  
(TAX-DEDUCTIBLE) IN THE AMOUNT OF \$ .....

PLEASE MAKE YOUR CHECK PAYABLE TO THE GEORGIA  
HISTORICAL SOCIETY AND RETURN WITH THIS FORM.

BASED ON MEMBERSHIP SERVICES AND BENEFITS, THE  
INTERNAL REVENUE SERVICE HAS DETERMINED THAT ALL  
BUT \$80 OF YOUR MEMBERSHIP FEE IS TAX DEDUCTIBLE.

104 W GASTON STREET | SAVANNAH, GA 31401  
TEL 912.651.2125 | FAX 912.651.2831

260 14TH ST NW, SUITE A-148 | ATLANTA, GA 30318  
TEL 404.283.5410

GEORGIAHISTORY.COM

## ABOUT THE GEORGIA HISTORICAL SOCIETY

Georgia Historical Society (GHS) is the premier independent statewide institution responsible for collecting, examining, and teaching Georgia history. GHS houses the oldest and most distinguished collection of materials related exclusively to Georgia history in the nation.

Founded in 1839, the Georgia Historical Society is the oldest continuously operated historical society in the South. As an educational and research institution, GHS teaches Georgia and American history through a variety of educational programs, scholarly publications, and research services. Headquartered in Savannah, with an office in Atlanta, GHS has nearly 6,000 members and 100 affiliates in 60 counties.



GEORGIA HISTORICAL SOCIETY  
104 W. GASTON STREET  
SAVANNAH, GA 31401



GEORGIA  
HISTORICAL SOCIETY



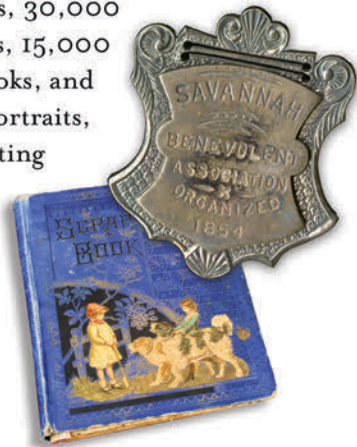


## WHY SHOULD I BE A GHS MEMBER?

As a member, you help GHS fulfill its educational mission to collect, examine, and teach Georgia history. Your support directly helps us provide educational programming for students, training for teachers, and services for researchers. In addition, you will enjoy a full range of benefits, including GHS publications, free admission to the Research Center, invitations to events, and much more. Join us as we explore the past to create a better future.

## THE GHS RESEARCH CENTER

The GHS Research Center is the state-of-the-art home to an unparalleled collection of Georgia and American history. Over 5 million manuscripts, 100,000 photographs, 30,000 architectural drawings, 15,000 rare and non-rare books, and thousands of maps, portraits, and artifacts representing Georgia's founding through present day are preserved and shared at the GHS Research Center.



## HISTORICAL MARKERS

GHS's statewide historical marker program offers the public an opportunity to learn history in the places where it happened. These summaries of historical events and people are available through a searchable database and mobile app that allow users to access information on markers in all parts of Georgia.



Travel routes can be created based on individual interests as well as by topic, such as the Civil War, the Civil Rights Movement, and more.

## GHS PUBLICATIONS

GHS promotes research and teaches history through the award-winning *Georgia Historical Quarterly*, the scholarly journal of record for Georgia history since 1917, and *Georgia History Today*, GHS's popular history newsmagazine. Members receive new issues of each throughout the year.



## EDUCATION AND OUTREACH

GHS provides students of all ages, teachers, and families with a variety of opportunities to explore and engage with the unique and diverse stories of Georgia's past and present. Programming offers historical context, perspective, and lessons to help Georgians understand the present and build a better future. From professional development, to scholarly lectures, to online curricular resources, GHS is committed to teaching history in ways that will inform and engage while also equipping learners with critical thinking skills that will help them tackle current and future challenges.



## THE GEORGIA HISTORY FESTIVAL

The annual *Georgia History Festival* is GHS's signature K-12 educational program. A variety of public programs, exhibits, in-school events, and educational resources bring history to life for students of all ages. The *Festival* kicks off in September and includes events like the popular Colonial Faire and Muster living-history program held at Wormsloe State Historic site, the Georgia Day Parade, Super Museum Sunday, and the annual Trustees Gala.

## AFFILIATE CHAPTER PROGRAM

The Affiliate Chapter Program supports local historical organizations across the state by building a network of institutions with a commitment to Georgia history. GHS offers a variety of services and resources to Affiliate Chapter members, including consultations, guest speakers, workshops, subscriptions to GHS publications, publicity, exclusive online resources, and awards in recognition of outstanding achievement.



## MEMBERSHIP LEVELS AND BENEFITS

As a GHS member you will enjoy a full range of benefits, including GHS publications, free admission to the GHS Research Center, invitations to events, and much more! Please join today!

**Student (\$35/year, current ID required):** Free admission to the GHS Research Center Reading Room and discounts on photocopies, research fees, and photograph orders.

**Individual (\$55/year, 1 adult) or Household (\$65/year, entire household):** All the above, plus 20% discount on GHS merchandise, free annual subscription to *Georgia History Today* and the *Georgia Historical Quarterly*, and free or discounted admission to select programs and activities.

**Sponsor (\$100/year):** All the above, plus a complimentary set of GHS postcards.

**Benefactor (\$250/year):** All the above, plus a complimentary historic print.

**Sustainer (\$500/year):** All the above, plus priority reservations for two research appointments and a one-year gift membership to a household or individual of your choice.

**John Macpherson Berrien Circle (\$1,000/year):** All the above, plus two additional research appointments (four total), two free guest admissions per visit, VIP invitations to GHS annual events, and acknowledgment in the Annual Report.

**William Brown Hodgson Circle (\$2,500/year):** All the above, plus two research appointments (six total) and preferential seating at GHS annual events.

**1839 Society (\$5,000/year):** All the above, plus an exclusive tour of the GHS Research Center.

**1733 Circle (\$10,000/year):** All the above, plus priority seating at GHS annual events and an exclusive invitation to unique day or overnight trip.